

OPEN ACCESS: MAC Book Notes

“GOOD FOR WHAT AILED YOU” IN SPRINGFIELD, ILLINOIS

**EMBOSSED PHARMACEUTICAL BOTTLES USED BY SPRINGFIELD DRUGGISTS
FROM THE CIVIL WAR ERA TO THE EARLY TWENTIETH CENTURY**

FREDERICK M. BROWN



WITH INTRODUCTIONS BY CURTIS MANN AND KENNETH B. FARNSWORTH



**ILLINOIS STATE
ARCHAEOLOGICAL SURVEY**
PRAIRIE RESEARCH INSTITUTE



Studies in Archaeological Material Culture No. 2

Published by the Illinois State Archaeological Survey. 2015. 440 pp., \$9.99 (eBook).

Copyright © 2016 Midwest Archaeological Conference, Inc. All rights reserved.

Fred's in-depth research on the use-history and manufacturing history of Springfield, Illinois, embossed pharmacy bottles in Springfield, Illinois is an important "follow-up" study to *Bottled in Illinois* (ISAS *Studies in Archaeology* 6)—Farnsworth and Walthall's earlier volume on Illinois embossed bottles that date to the 1840–1880 era. But it is clear from the detail and complexity of Fred's Springfield study that expanding his research to encompass embossed pharmacy bottles statewide would be a daunting task of practically impossible proportions.

But the good news for archaeologists is that Fred's Springfield study can be used as a *statewide* model to determine the functions of specific bottle styles and the age of archaeological features in which these bottles are recovered, regardless of the company name or town name embossed on the bottles. This wider archaeological significance of Fred's Springfield study is the subject of Farnsworth's *Drugstore Bottles for Archaeologists* overview.



ILLINOIS STATE ARCHAEOLOGICAL SURVEY STUDIES IN MATERIAL CULTURE

ISAS Publications may be obtained online at: <https://shop.inrs.illinois.edu/shop-isas.html>.
For more information, visit us on the web at: www.isas.illinois.edu

About the Author



Fredrick M. Brown, Fabrication Artisan

Fred Brown, a life-long Springfield resident, has spent his professional career designing displays and building models for the Exhibits Section of the Public Affairs Division of the Illinois Department of Transportation. In this largely self-created role, Fred produced replicas of many important artifacts discovered at Illinois archaeological sites in road-construction right-of-ways, and has used the information from these excavations to design breathtaking historical and archaeological models of several important historic and prehistoric sites and structures discovered and studied in advance of highway construction. Fred's models have been displayed at the University of Illinois ISAS headquarters in Urbana and in the Museum of the Grand Prairie in Mahomet ("Hidden Underfoot: Historical Archaeology in Illinois").

Fred was a key participant in the recent ISAS "Bottled in Illinois" project [ISAS *Studies in Archaeology* 6, 2011], documenting the historical context of 1840-1880 Illinois historical bottles found at archaeological sites statewide. His latest research project, reported here, takes Illinois historic Illinois glass studies one step further—preparing and assembling a volume focused on embossed Springfield pharmacy glassware used by the developing drugstore industry in the capitol city from 1860 to 1920.



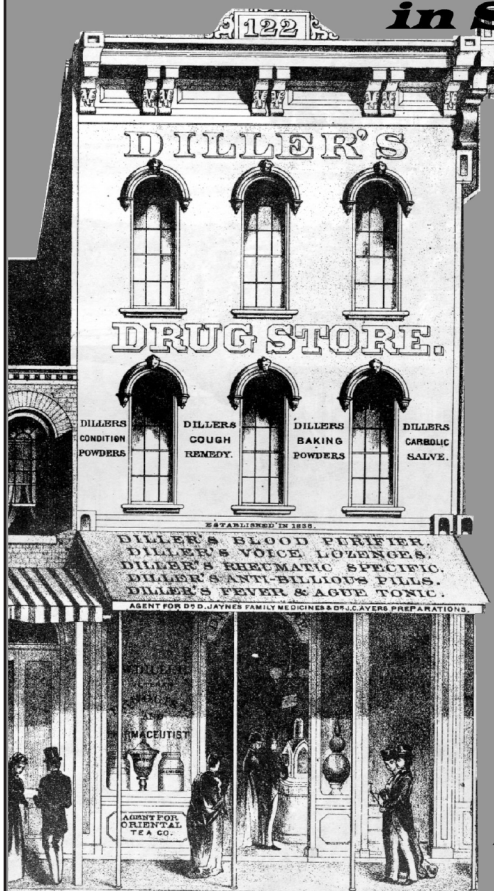
FRONT COVER IMAGE. Examples of Illinois amber, teal, "milk glass," cobalt, and green embossed pharmacy bottles. Photography by Kenneth B. Farnsworth.

BACK COVER IMAGE. Humorous trade card, 1907-1918, Jacob Booth pharmacy in Springfield.

INSIDE FRONT COVER IMAGES. Photos of Fred Brown by Linda Alexander, ISAS Photographer.

Cover Design by Linda Alexander and Sarah Boyer.
Book Design by Fred Brown.
ISAS Production

**"Good for what ailed you"
in Springfield
Illinois**



Frederick M. Brown

**The embossed Pharmaceutical bottles used by
Springfield Druggists from the Civil War era
to the early twentieth century.**

Bottle Identification Guide

**Drugstore Bottles for Archaeologists:
Embossed Springfield Pharmacy Glassware
From the Civil War to the Roaring Twenties**

*Kenneth B. Farnsworth
Illinois State Archaeological Survey*

| | |
|--|----|
| <i>Introduction</i> | 15 |
| <i>Stylistic Attributes and Use-Chronology of Embossed Springfield Pharmacy-Bottles</i> | 22 |
| <i>Patented Shapes and Named Styles of Springfield Pharmacy Glassware</i> | 24 |
| Embossed Prescription Bottles: 1865–1880 Era | 31 |
| Embossed Prescription Bottles: 1880–1890 Era | 32 |
| Embossed Prescription Bottles: 1890–1900 Era | 33 |
| Embossed Prescription Bottles: Early 20th Century | 33 |
| Base-Embossed Patent Dates on Springfield Pharmacy Prescription Bottles | 34 |
| Springfield Pharmacy Bottle Lip-Finish Chronology | 35 |
| <i>U.S. Glass Houses Known to Have Manufactured Springfield Embossed Pharmacy Bottles</i> | 36 |
| <i>Other Time-Sensitive Attributes of Springfield Pharmacy Glassware</i> | 39 |
| Springfield Pharmacist Embossed Toiletry Bottle Styles | 39 |
| Springfield Pharmacist Embossed Patent-Medicine Style Bottles | 40 |
| Springfield Pharmacy Medicines Put Up in Patent-Medicine-Style Bottles..... | 42 |

| | |
|---|--------------|
| 1850-1860 | 44 |
| 1865-1890 | 44 |
| Post-1890 | 45 |
| Springfield Liquor Dealer Pharmacy-Style Bottle..... | 45 |
| Use of Colored Glass to Manufacture Springfield Embossed Pharmacy Bottles | 45 |
| Decorative Logos Used on Springfield Embossed Pharmacy Glassware | 48 |
| Embossed Graduation-Measures on Springfield Prescription Bottles | 51 |
| Springfield Pharmacy Dose-Glass Chronology | 51 |
| Final Thoughts on Early Springfield Drugstores and Their Embossed Bottles | 53 |
| 1. The Transition from Hand-Blown to Machine-Made Bottles, and the End of Embossed Pharmacy Glassware in Springfield | 53 |
| 2. The Earliest Illinois-Pharmacy Use of Embossed Prescription Bottles in Standard Shapes and Graduated Sizes | 53 |
| 3. The Myth of 19th Century "Neighborhood Drugstores" Distribution of Springfield Pharmacies from the Civil War to the Roaring Twenties | 56 |
| <i>Pharmacy Distribution Maps</i> | 58-82 |
| <i>References</i> | 83 |

